



JACKSON KOLLER

Alaska 2000

by
Jackson Koller
© 2000
Revised 05/2003



Table Of Contents

Alaska 2000.....	1
Table Of Contents.....	2
Intro.....	3
Alaska 2000.....	4
Snow Mobiling.....	24
Prologue.....	31
Photo Index.....	32



JACKSON KOLLER

Intro

We finally made it up to [Alaska](#) this year, for Thanksgiving. Though Patricia lived there for many years, it was my first trip.

We flew into Anchorage, staying at a family friends house in Eagle River, halfway between Anchorage and Palmer.

Heather, Patricia's eldest lives near Wasilla. And we went North to Talkeetna (about two hours North of Wasilla) to go snowmobiling.

Patricia got to see family and I got to see some of Alaska. Very pretty, very different. Next trip we want to head South into the Kenai Peninsula, down towards Seward or Soldotna, etc.

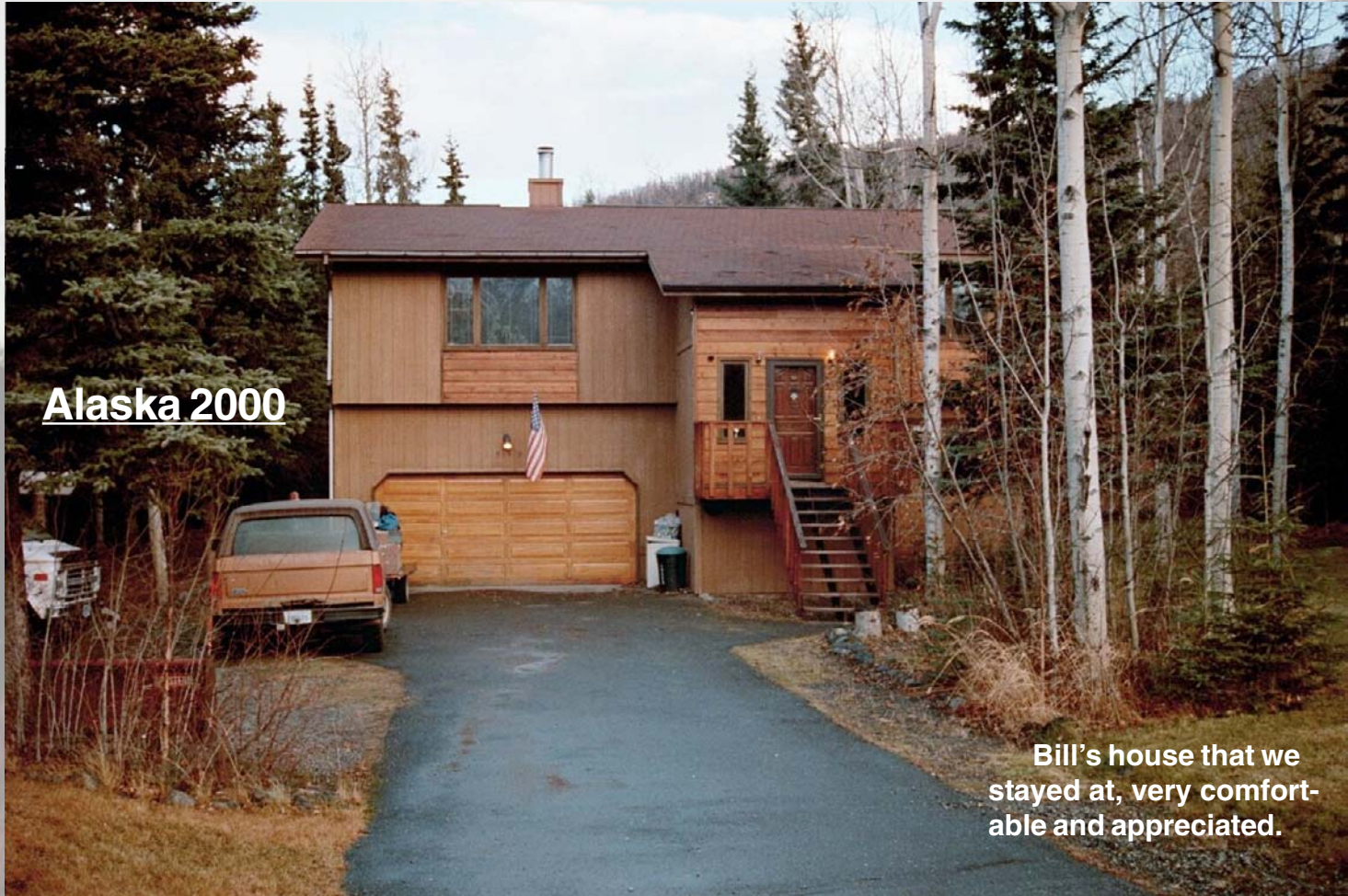




JACKSON KOLLER

Alaska 2000

Alaska 2000 - Page 4



Bill's house that we stayed at, very comfortable and appreciated.



JACKSON KOLLER

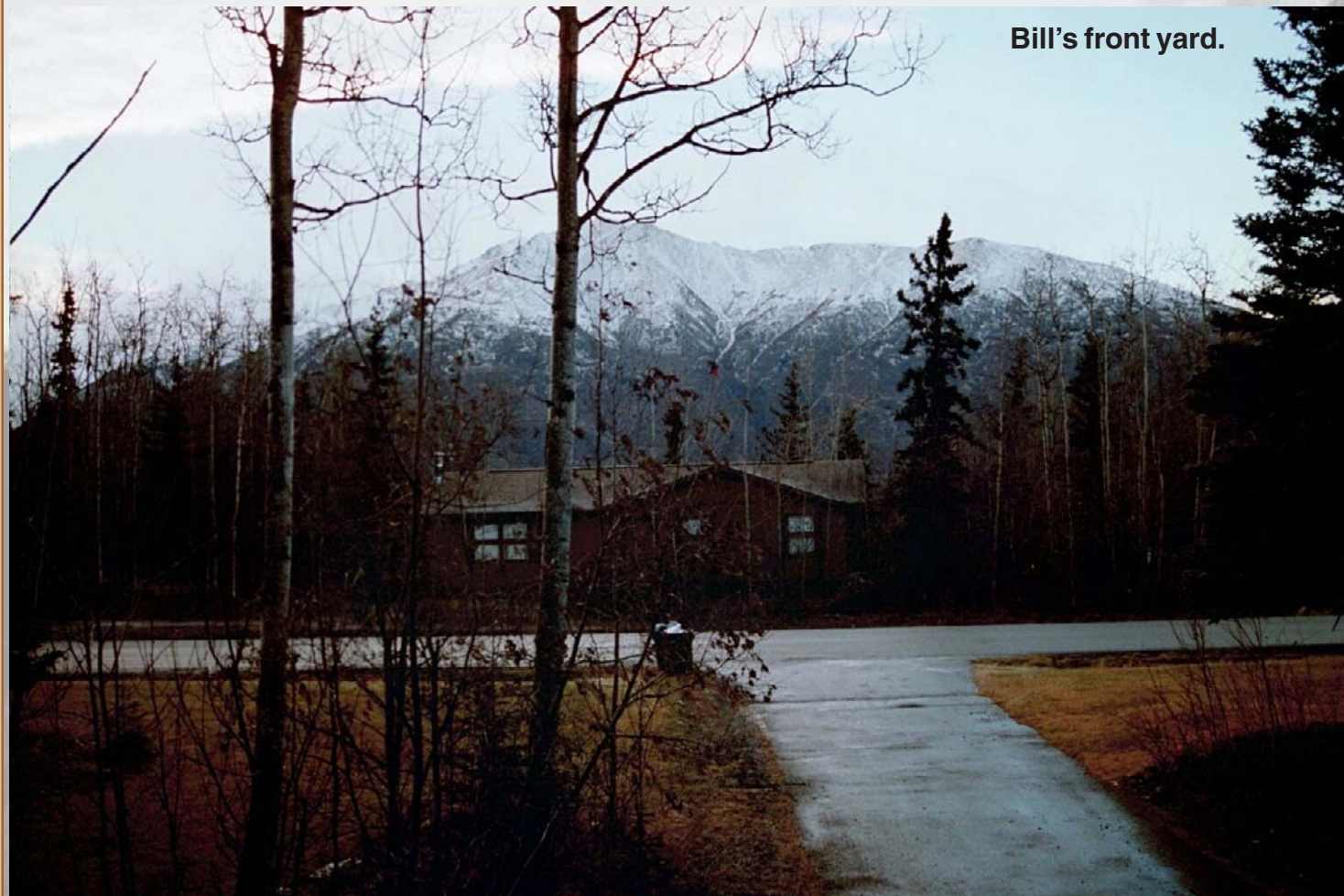
Steps down to the
jacuzzi out back.





JACKSON KOLLER

Bill's front yard.





JACKSON KOLLER



Bill's street, what a scenario to live in. Town at one end, and it dead ends into a park at the other.



JACKSON KOLLER

**Bill and Patricia at
the park at the end of
his street.**





JACKSON KOLLER





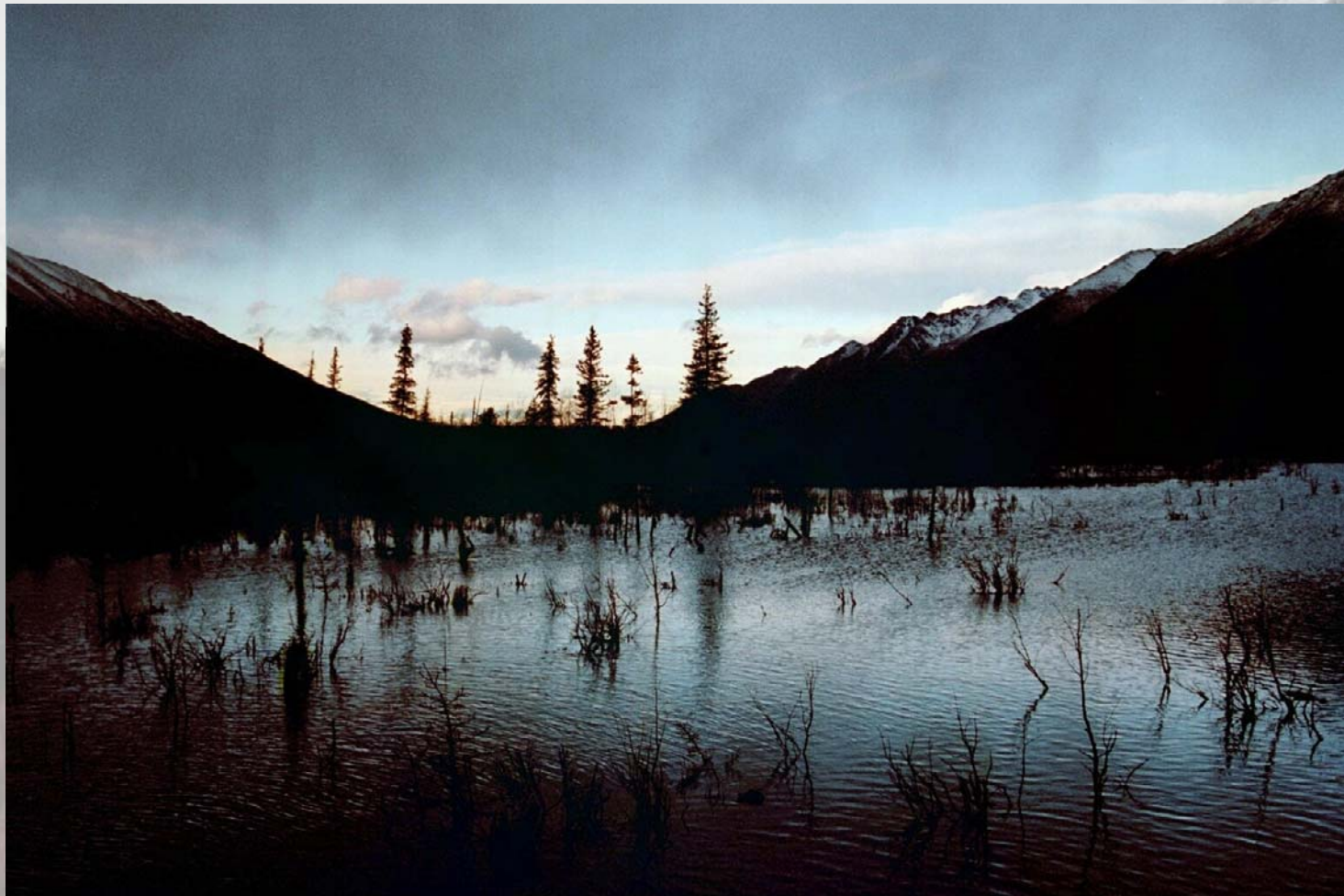
JACKSON KOLLER

Beaver lodge





JACKSON KOLLER





JACKSON KOLLER





JACKSON KOLLER





JACKSON KOLLER

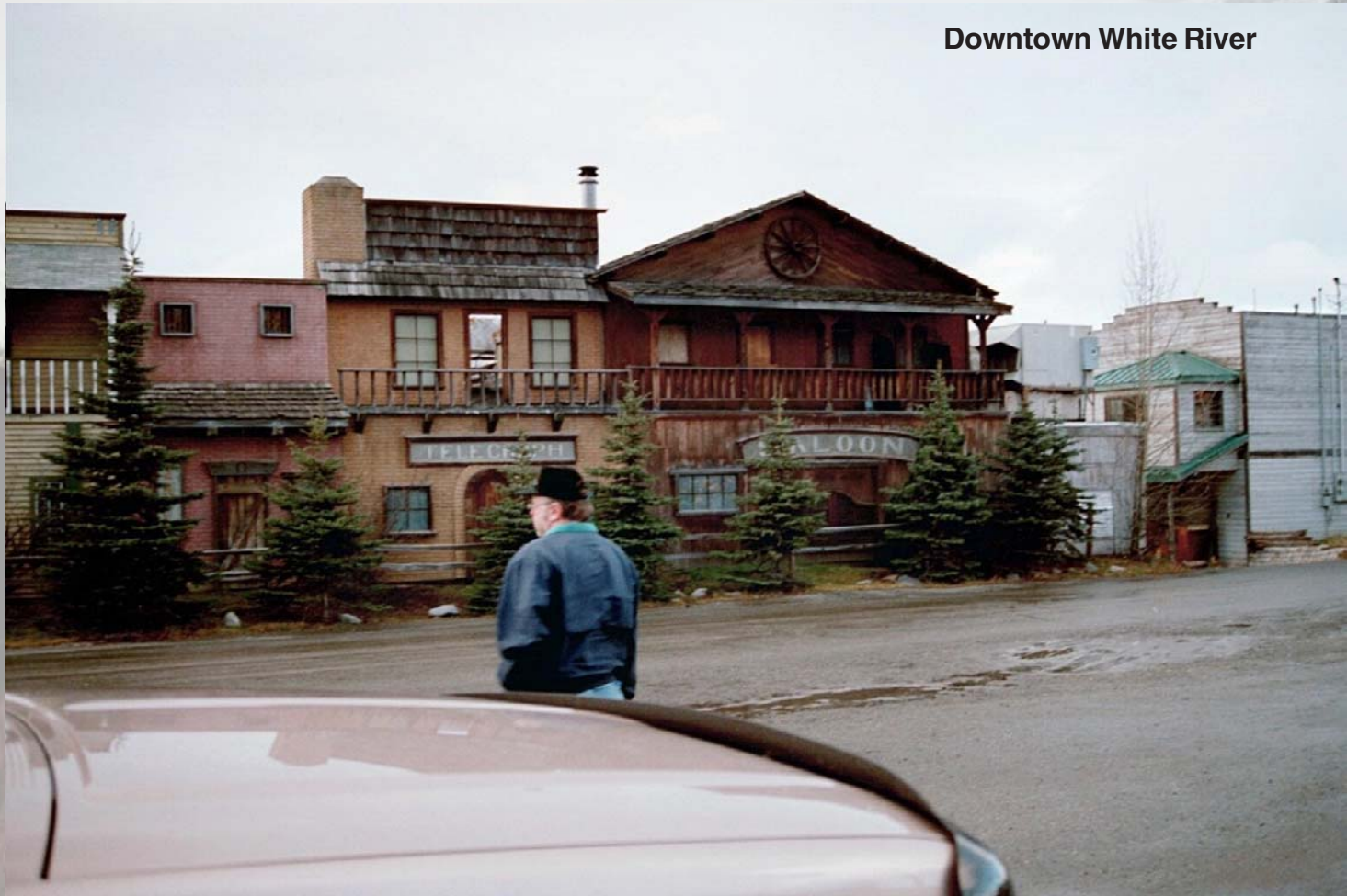
Alaska 2000 - Page 14





JACKSON KOLLER

Downtown White River





JACKSON KOLLER



Russian graveyard, I can't pronounce the name of the place.



JACKSON KOLLER





JACKSON KOLLER

Russian church



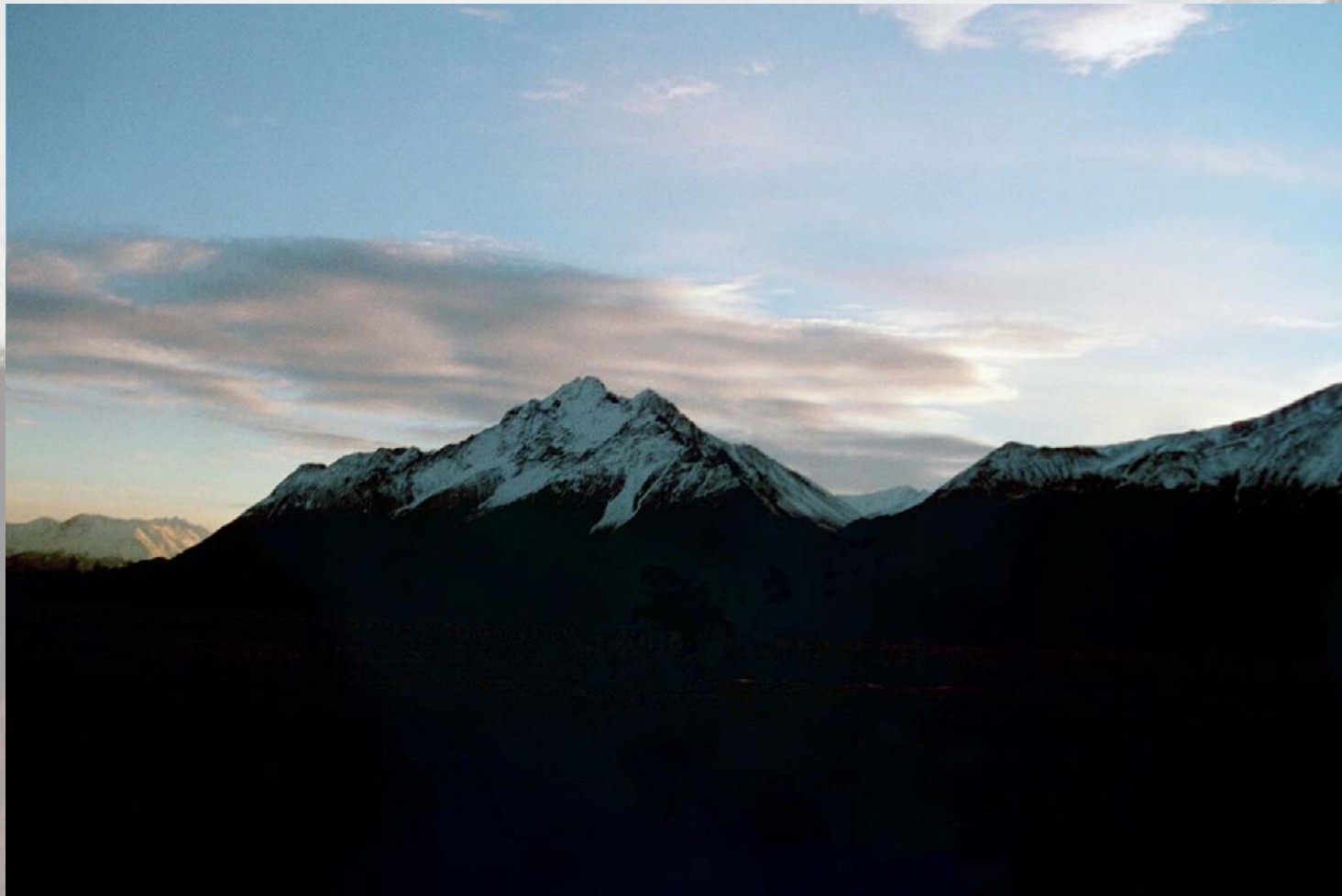


JACKSON KOLLER





JACKSON KOLLER





JACKSON KOLLER

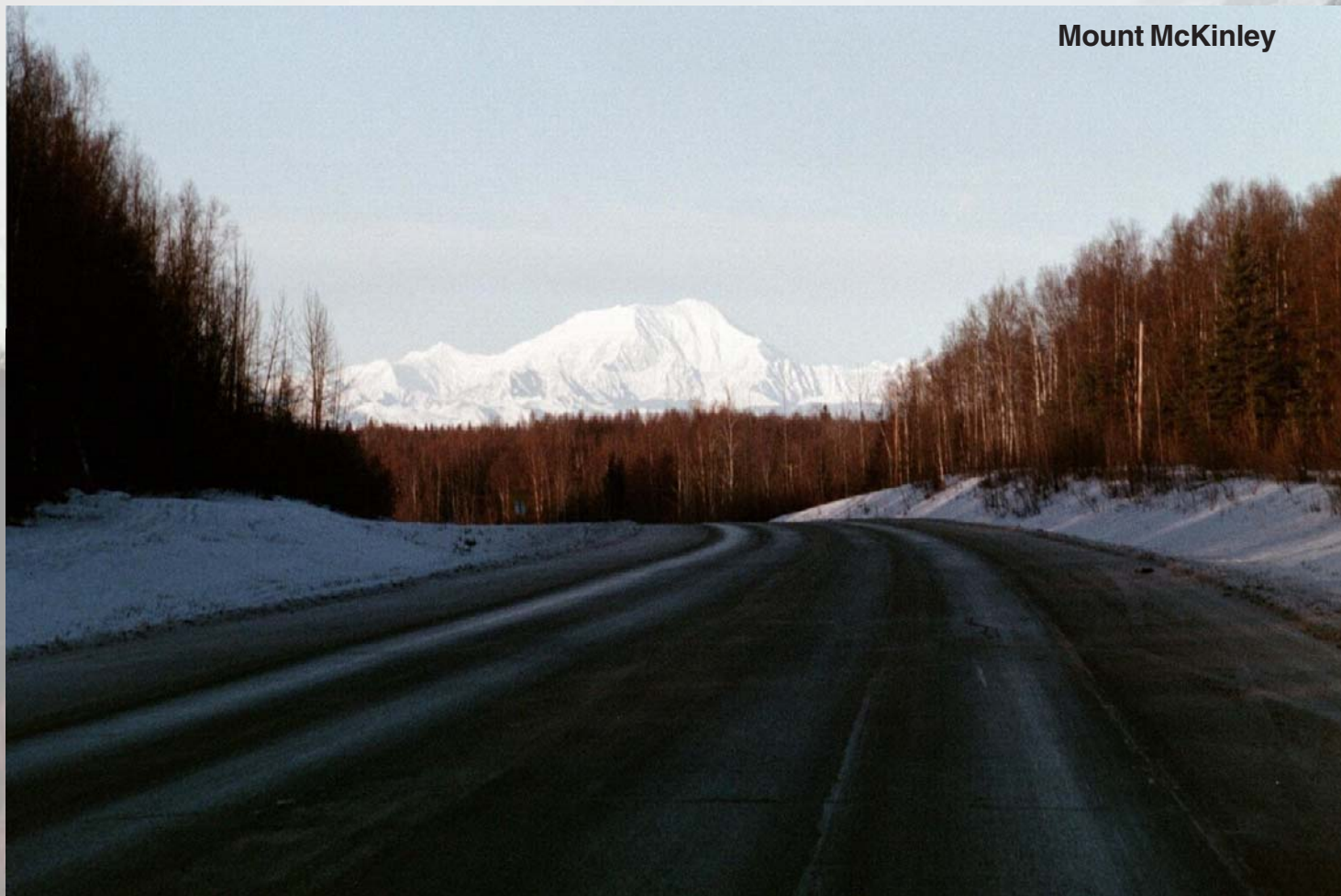
Alaska 2000 - Page 21





JACKSON KOLLER

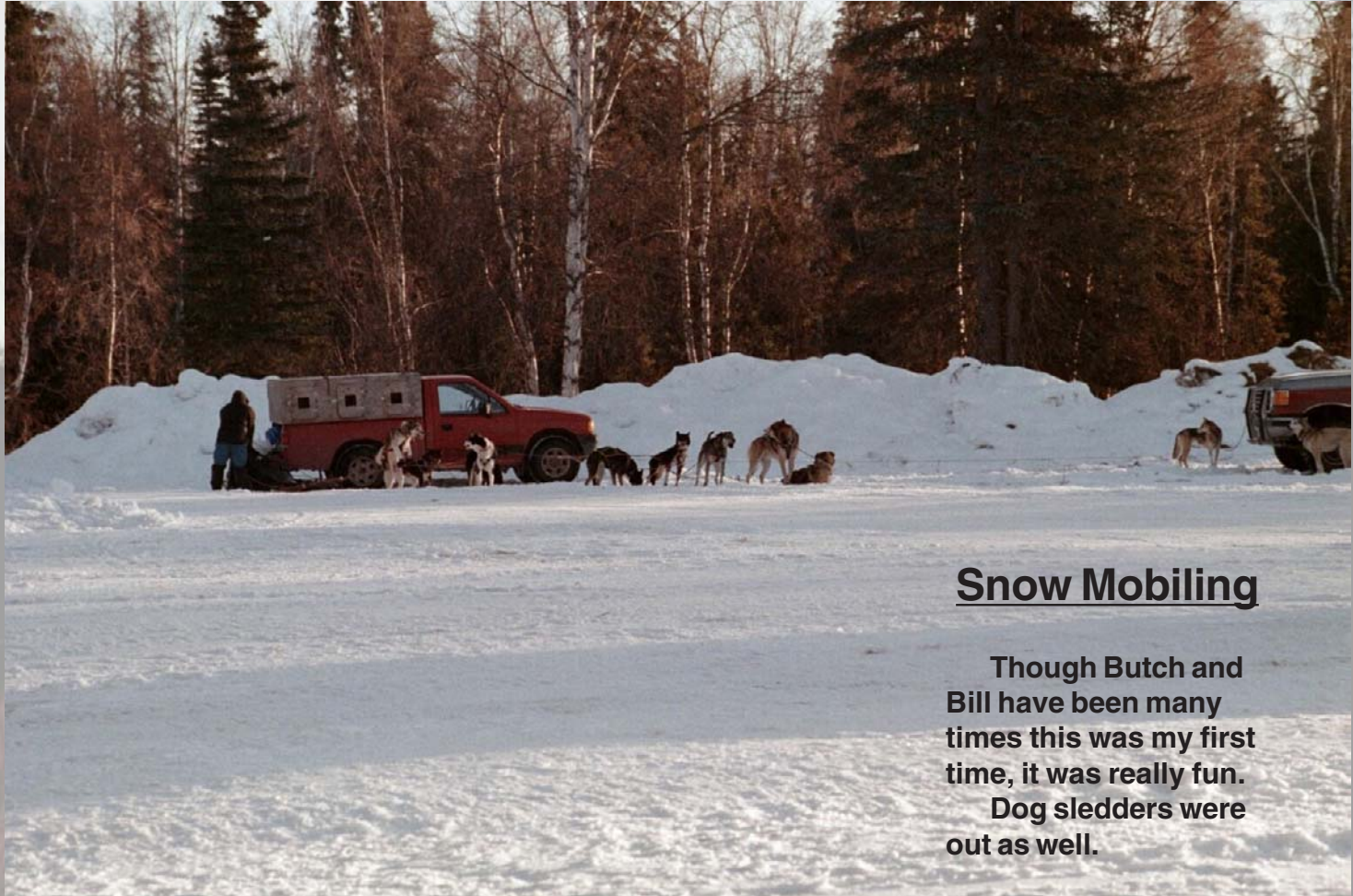
Mount McKinley





JACKSON KOLLER





Snow Mobiling

Though Butch and Bill have been many times this was my first time, it was really fun.

Dog sledgers were out as well.



JACKSON KOLLER



Bill and Butch



JACKSON KOLLER





JACKSON KOLLER





JACKSON KOLLER





JACKSON KOLLER





JACKSON KOLLER





Prologue

This trip was more for family than sight seeing.

Had a wonderful Thanksgiving dinner at Bill's. His kitchen was large enough for Patricia to do her best.

Scenery was different than what I had expected, mostly flat lands and mountains, and the trees were stunted from the harsh climate from what I am used to, but overall very pretty.

Looking forward to getting into some of the true forested areas on a future trip.



Photo Index

A

Alaska Map 3

B

Beaver lodge 10

Bill and Butch 25

Bill and Patricia 8

Bill's front yard. 6

Bill's House 4

Bill's Street 7

D

Dog sled 24

Dog sledder 30

Downtown White River 15

F

Flatlands 19

I

Iced pond 21

Icy river 23

J

jacuzzi 5

M

McKinley from field 29

Mount McKinley 22

P

Park grassland 13

Park pond 9

Park Reeds 14

Pond 12

Pond sunset 11

R

Randy on snow mobile 26

Range ridge 20

Russian church 18

Russian graves 17

Russian graveyard 16

Russian kiosk 17

S

Snow field 27

Straight away 28