



Figure 1: Al Tshahir class frigate



*Figure 2: uss saratoga with borg cube*



Figure 3: uss saratoga/top



Figure 4: uss saratoga/rear



**NCX - 101138**  
**U.S.S. PHOENIX**

ASCENSION CLASS

MEMORY ALPHA CENTRAL  
 CHANNEL CURRENTLY DOWN  
 DATA UNAVAILABLE AT THIS TIME



**NCC - 85240**  
**U.S.S. SAO PAULO**

ATLANTIA CLASS

TYPE : DETERRENCE CRUISER  
 LENGTH : 356 METERS  
 BEAM : 288 METERS  
 HEIGHT : 73 METERS  
 MASS :  
 CREW COMPLIMENT : 227  
 ARMAMENT : 10 X TYPE-XIV PHASER ARRAYS  
 10 X TYPE-5 BURST FIRE TORPEDO LAUNCHERS  
 DEFENCES : AUTO-REGENERATIVE SHIELD MATRIX  
 HEAVY DURANIUM/TRITANIUM DOUBLE HULL  
 PLUS 25 CENTIMETERS OF ABLATIVE HULL ARMOR  
 HIGH LEVEL STRUCTURAL INTEGRITY FIELD  
 SPEEDS : CRUISING SPEED: WARP 8.6  
 MAXIMUM CRUISE: WARP 9.5

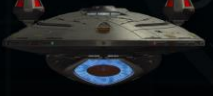




# NCC - 74851 U.S.S. CANTELL

CANTELL CLASS

MEMORY ALPHA CENTRAL  
CHANNEL CURRENTLY DOWN  
DATA UNAVAILABLE AT THIS TIME



# NCC - 70611 U.S.S. CHEYENNE

CHEYENNE CLASS

TYPE : ENHANCED SCIENTIFIC/DIPLOMATIC EXPLORER  
COMMISSIONED : 2345 - 2352. CLASS REMAINS IN SERVICE  
LENGTH : 384 M  
BEAM : 250 M  
HEIGHT : 113 M  
MASS : 1,305,000 METRIC TONS  
CREW : 245  
ARMAMENT : 2 X TYPE VIII PHASER ARRAYS  
2 X TYPE 2 BURST FIRE PHOTON TORPEDO TUBES  
DEFENCES : STANDARD SHIELD SYSTEM  
STANDARD DURANIUM SINGLE HULL.  
STANDARD LEVEL STRUCTURAL INTEGRITY FIELD  
SPEEDS : NORMAL CRUISE : WARP 6  
MAXIMUM CRUISE : WARP 9





Figure 5: uss southern cross endurance class



Figure 6: federation class dreadnought

# NX-77197 U.S.S. INTERCEPTOR

INTERCEPTOR CLASS

DATA DOWNLOAD LINK QUEUED  
STANDBY FOR PACKET TRANSFER



# INTREPID

INTREPID CLASS

TYPE : WARSHIP  
COMMISSIONED : 2152 - 2158,  
REMAINED IN SERVICE UNTIL 2188  
LENGTH : 187 M  
BEAM : 163 M  
HEIGHT : 37 M  
DECKS : 5  
MASS : 100,000  
CREW : 47  
ARMAMENT : 2 X PHASE CANNONS,  
2 X MOD 2 SPATIAL TORPEDO TUBES  
DEFENCES : LIGHT MONDONTANIUM SINGLE HULL  
PLUS 3 CM POLARISED ARMOUR.  
LOW LEVEL STRUCTURAL INTEGRITY FIELD  
SPEEDS : MAXIMUM CRUISE : WARP 4.5





# U.S.S. MAYFLOWER

COLONIZATION SUPPORT VESSEL

DETAILS OF THIS VESSEL ARE CURRENTLY UNAVAILABLE  
DUE TO MEMORY ALPHA SUB/SSB UPGRADE  
AND MAINTENANCE



# NCC - 64923 U.S.S. BUDAPEST

NORWAY CLASS

TYPE : DESTROYER (SCIENCE/DIPLOMACY ENHANCED)  
COMMISSIONED : 2360 - 2370. CLASS REMAINS IN SERVICE  
LENGTH : 364.77 M  
BEAM : 225.61 M  
HEIGHT : 52.48 M  
MASS : 622,000 METRIC TONS  
CREW : 190  
ARMAMENT : 6 x TYPE IX PHASER BANKS  
2 x STANDARD PHOTON TORPEDO TUBES  
DEFENCES : STANDARD SHIELD SYSTEM  
STANDARD DURANIUM/TRITANIUM SINGLE HULL  
STANDARD LEVEL STRUCTURAL INTEGRITY FIELD  
SPEEDS : NORMAL CRUISE : WARP 6  
MAXIMUM CRUISE : WARP 8.4



# NCC-72381 U.S.S. EQUINOX

NOVA CLASS

TYPE: SCIENCE VESSEL  
ACTIVE: 2369 - 2370, CLASS REMAINS IN SERVICE  
LENGTH: 185 M  
BEAM: 62 M  
HEIGHT: 34 M  
MASS: 127,000 METRIC TONS  
CREW: 78  
ARMAMENT: 11 X TYPE VIII PHASER ARRAYS,  
2 X STANDARD PHOTON TORPEDO TUBE  
DEFENCE SYSTEMS: STANDARD2 SHIELD SYSTEM,  
STANDARD URANIUM/TRITANIUM SINGLE HULL,  
STANDARD LEVEL STRUCTURAL INTEGRITY FIELD  
SPEED: NORMAL CRUISE: WARP 6  
MAXIMUM CRUISE: WARP 7



# NX-59650 U.S.S. PROMETHEUS

PROMRTHEUS CLASS



PRIMARY HULL



SECONDARY HULL



TERTIARY HULL



[TACTICAL MULTI-VECTOR ASSAULT SEPERATION]



Figure 7: soyz class reliant conversion above/right/rear



Figure 8: soyuz class reliant conversion below



Figure 9: soyuz class reliant conversion front/left

# NCC-52131 U.S.S. IRONCLAD

STEAMRUNNER CLASS

TYPE: LIGHT CRUISER  
ACTIVE: 2342 - 2363. CLASS REMAINS IN SERVICE  
LENGTH: 244 M  
BEAM: 160 M  
HEIGHT: 40 M  
MASS: 375,000 METRIC TONS  
CREW: 185  
ARMAMENT: 6 X TYPE VIII PHASER ARRAYS,  
2 X PULSE FIRE PHOTON TORPEDO TUBE  
2 X STANDARD PHOTON TORPEDO TUBE  
DEFENCE SYSTEMS: STANDARD SHIELD SYSTEM,  
STANDARD DURANIUM/TRITANIUM DOUBLE HULL  
STANDARD LEVEL STRUCTURAL INTEGRITY FIELD  
SPEEDS: NORMAL CRUISE: WARP 6  
MAXIMUM CRUISE: WARP 8.6



# NCC - 92002 U.S.S. SUPERNOVA

SUPERNOVA CLASS

DETAILS OF THIS VESSEL ARE CURRENTLY UNAVAILABLE  
DUE TO MEMORY ALPHA SUB/556 UPGRADE  
AND MAINTENANCE





## NCC-2009 U.S.S. SYDNEY

SYDNEY CLASS

TYPE : LONG RANGE PERSONNEL TRANSPORT  
 COMMISSIONED : 2279 - 2290,  
 REMAINED IN SERVICE UNTIL 2338  
 LENGTH : 238 M  
 BEAM : 80 M  
 HEIGHT : 50 M  
 MASS : 360.000 METRIC TONS  
 CREW : 125  
 ARMAMENT : NO BEAM WEAPONS  
 DEFENCE SYSTEMS : STANDARD 04 SHIELD SYSTEM,  
 STANDARD DURANIUM SINGLE HULL,  
 STANDARD LEVEL STRUCTURAL INTEGRITY FIELD  
 SPEEDS: NORMAL CRUISE : WARP 5.5  
 MAXIMUM CRUISE : WARP 6



## USS THUNDERCHILD NCC-26604



Front View



Aft View



Side View

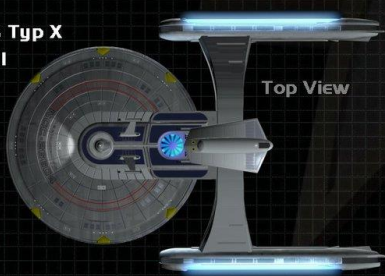
### THUNDERCHILD CLASS

Federation Fast Cruiser  
 Scout & Light Frigate

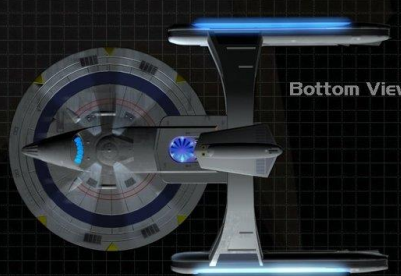


**ANTRIEB:** 2 M/AMR Warp Nacelles  
 (max. Warp 9.55)  
 4 Impuls Drive Engines

**BEWAFFNUNG:** 8 Torpedo Launcher  
 (4 forward, 4 aft)  
 2 Heavy Phaser Canons Typ X  
 16 Phaseremitter Typ VIII



Top View



Bottom View

**LÄNGE:** 331 m  
**BREITE:** 229 m  
**HÖHE:** 79,4 m

**DECKS:** 17  
**CREW:** 115, max: 450

(c) by Thomas Raube, Some Mesh Parts from "Masterdrage"



10: type 9 shuttlecraft



11: uss aries



12: 1701



Model Copyright 1998 Markus C. Nee  
Photograph Copyright 1998 Mark J. Stock

13: uss voyager with battle damage





14: akira class

